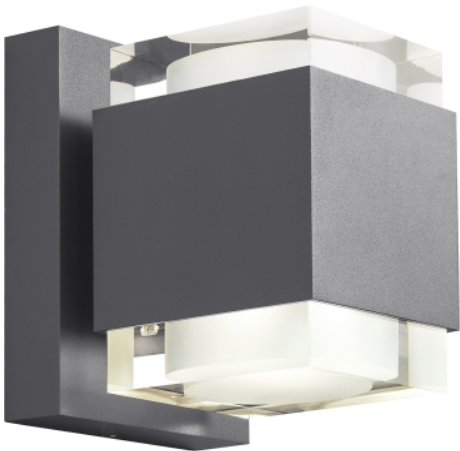


PRODUCT FEATURES

- From the brand formerly known as Tech Lighting
- Powerful, long lasting (L70, 70,000 hours) dimmable LED tested against the highest quality standards to ensure it delivers consistent LED performance and color over time.
- Die-cast aluminum structure, powder coat finish, and stainless steel hardware for robust durability in harsh elements. appropriate for commercial use.
- Universal 120-277 volt driver with integral transient surge protection at 2.5KV per American National Standard (ANSI) and IEEE standards.
- Wet listed, IP65 (International Protection rating indicating resistance to dust and water. suitable and safe for commercial use).
- Available in modern finishes



LAMPING

Charcoal



Bronze

Bronze
Downlight Only

Charcoal

Charcoal
Downlight Only

ORDERING INFORMATION

7000WVOT	CRI	COLOR TEMP	LENGTH (A)	FINISH	VOLTAGE
	8 80 CRI	27 2700K 30 3000K 40 4000K	8 8"	Z BRONZE H CHARCOAL	UNV UNV 120-277V

7000WVOT

JOB NAME

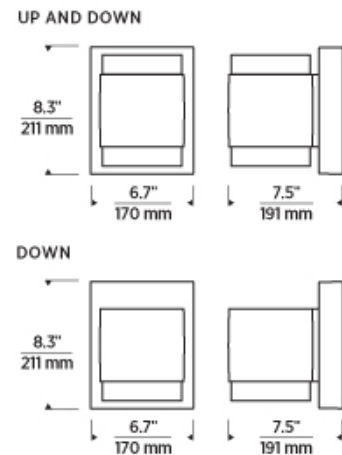
NOTES

VOTO 8 OUTDOOR WALL

VISUAL COMFORT & CO.

SPECIFICATIONS

PRIMARY MATERIAL	Aluminum
SHADE MATERIAL	Acrylic
NET WEIGHT	9.6 lbs
HEIGHT	8.3in
WIDTH	7.5in
LENGTH	6.7in
WET LISTED	
DAMP LISTED	
DRY LISTED	
GENERAL LISTING	ETL Listed
INCLUDES	



LAMPING SPECIFICATIONS

	LED LAMP	INTEGRATED LED	NON LED	NO LAMP
DELIVERED LUMENS		673.0 1394		
WATTS		14.3 27.9		
MAX WATTAGE PER BULB		14.3W		
		Universal 120V-277V 0-10, ELV		
CCT		2700K 3000K 4000K		
CRI		80 CRI		
LED LIFETIME				
L70		>60000		
AVERAGE BULB HOURS				
FIELD SERVICEABLE LED				
LAMP BASE		Integrated LED		
LAMP SHAPE		Integrated LED		
LAMP INCLUDED?		True		
WARRANTY**		5 Years		

* Dimming information available at www.techlighting.com/Downloads#dimming

** Visit techlighting.com for specific warranty limitations and details.

T20 / T24 / JA8 INFORMATION

	Integrated LED	Replacement LED Lamp	No Lamp *
This product can be used to comply with California Building Energy Efficiency Standards 2016 Title 24 Part 6 / JA8.	Yes		
This product can be used to comply with California Appliance Efficiency Standards 2016 Title 20 and may be shipped to and sold in California.	N/A		

* If a light fixture or component does not include a lamp or light source, it is the responsibility of the customer to select a lamp that meets the T24 and T20 requirements.



© 2019 Tech Lighting, L.L.C. All rights reserved. The "Tech Lighting" graphic is a registered trademark of Tech Lighting, L.L.C. Tech Lighting reserves the right to change specifications for product improvements without notification.

7400 Linder Avenue, Skokie, IL 60077
T 847.410.4400 | F 847.410.4500 | techlighting.com