

Elmwood Park Bath

4137301, 4437302, 4437303, 4437304 | 1.0

GENERATION LIGHTING

CAUTION - RISK OF FIRE

This product must be installed in accordance with the applicable installation code by a person familiar with the construction and operation of the product and the hazards involved.

Use minimum 90°C supply conductors.

GENERATION LIGHTING

7400 Linder Ave, Skokie, IL 160077

800.969.3347

www.visualcomfort.com

©2023 Visual Comfort & Co.. All rights reserved. The Visual Comfort & Co. logo is a registered trademark of Visual Comfort & Co. Visual Comfort & Co. reserves the right to change specifications for product improvements without notification

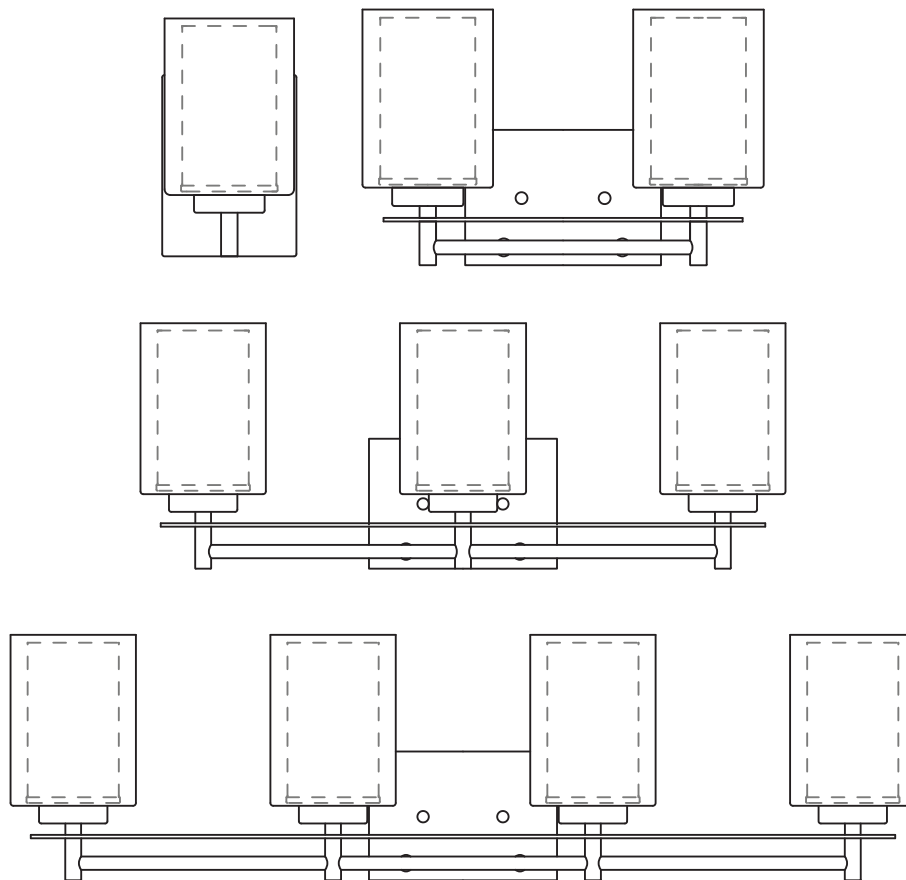
GENERAL PRODUCT INFORMATION:

These fixtures are intended to be installed utilizing NEC compliant junction boxes.

This product is safety listed for damp locations.

Incandescent version may be dimmed with a standard incandescent dimmer. LED version may be dimmed with a LED dimmer. Consult lamp manufacturer for additional information.

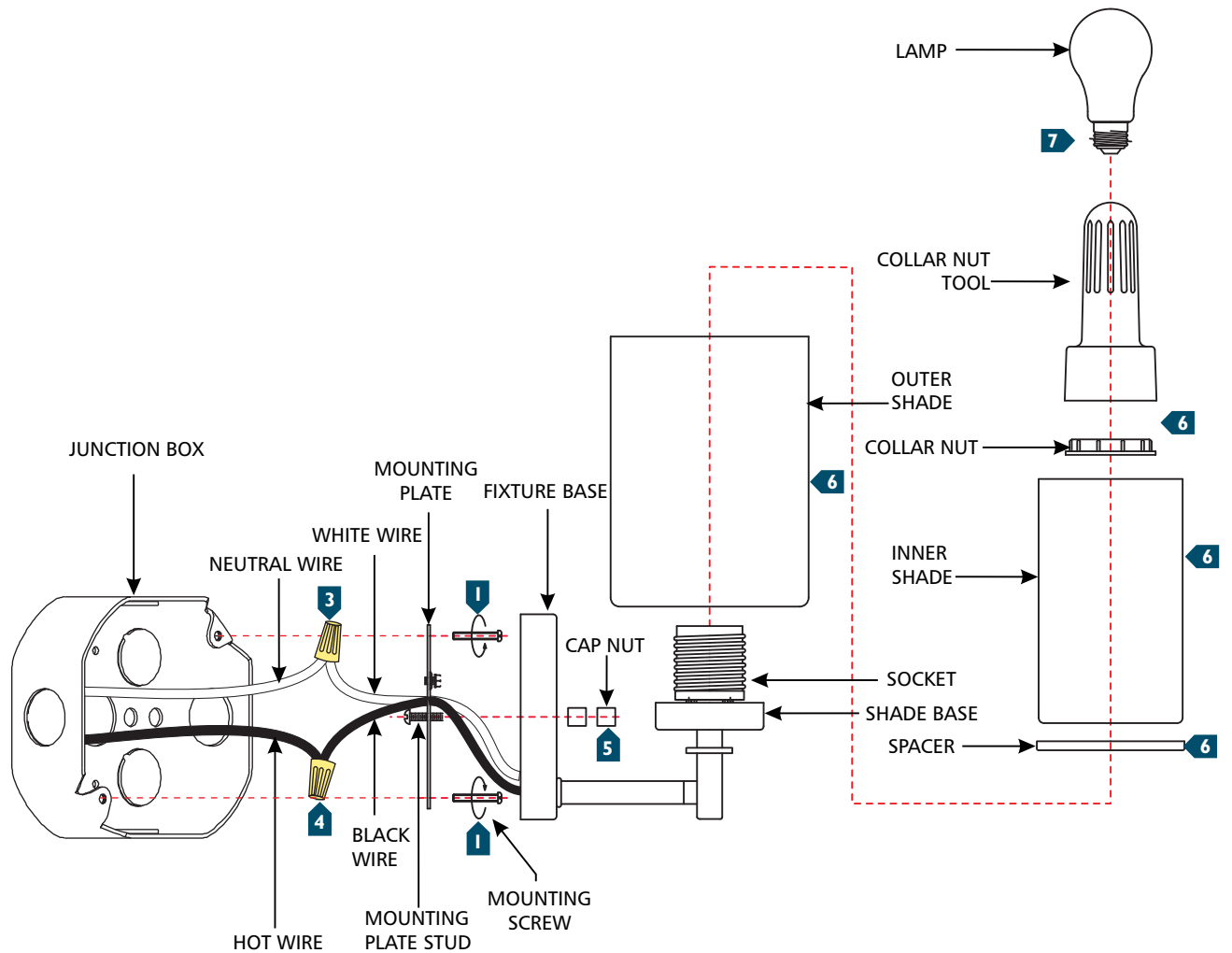
This instruction shows a typical installation.



SAVE THESE INSTRUCTIONS!

Install the Fixture

1A



- 1** Secure the mounting plate to the junction box.
- 2** Connect the fixture to a suitable ground in accordance to local electrical codes.
- 3** Connect the white fixture wire to the neutral power line wire with a wire nut.
- 4** Connect the black fixture wire to the hot power line wire with a wire nut.
- 5** Align and place the fixture base onto the mounting plate studs and secure it with the cap nuts.
- 6** Place the outer shade, spacer and inner shade onto the shade base, in that order. Then secure with the shade collar nut. Repeat for remaining shades. **Caution:** Over-tightening the collar nut may cause the glass to break and result in injury.
- 7** Screw the lamp(s) into the socket(s). Refer to the label on the socket for Max Wattage Information.