

Esefera Large and Extra Large Wall

KWWS101_, KWWS102_ | 1.1

VISUAL COMFORT & Co.

MODERN COLLECTION

GENERAL PRODUCT INFORMATION:

These fixtures are intended to be installed utilizing NEC compliant junction boxes.

This product is safety listed for damp locations.

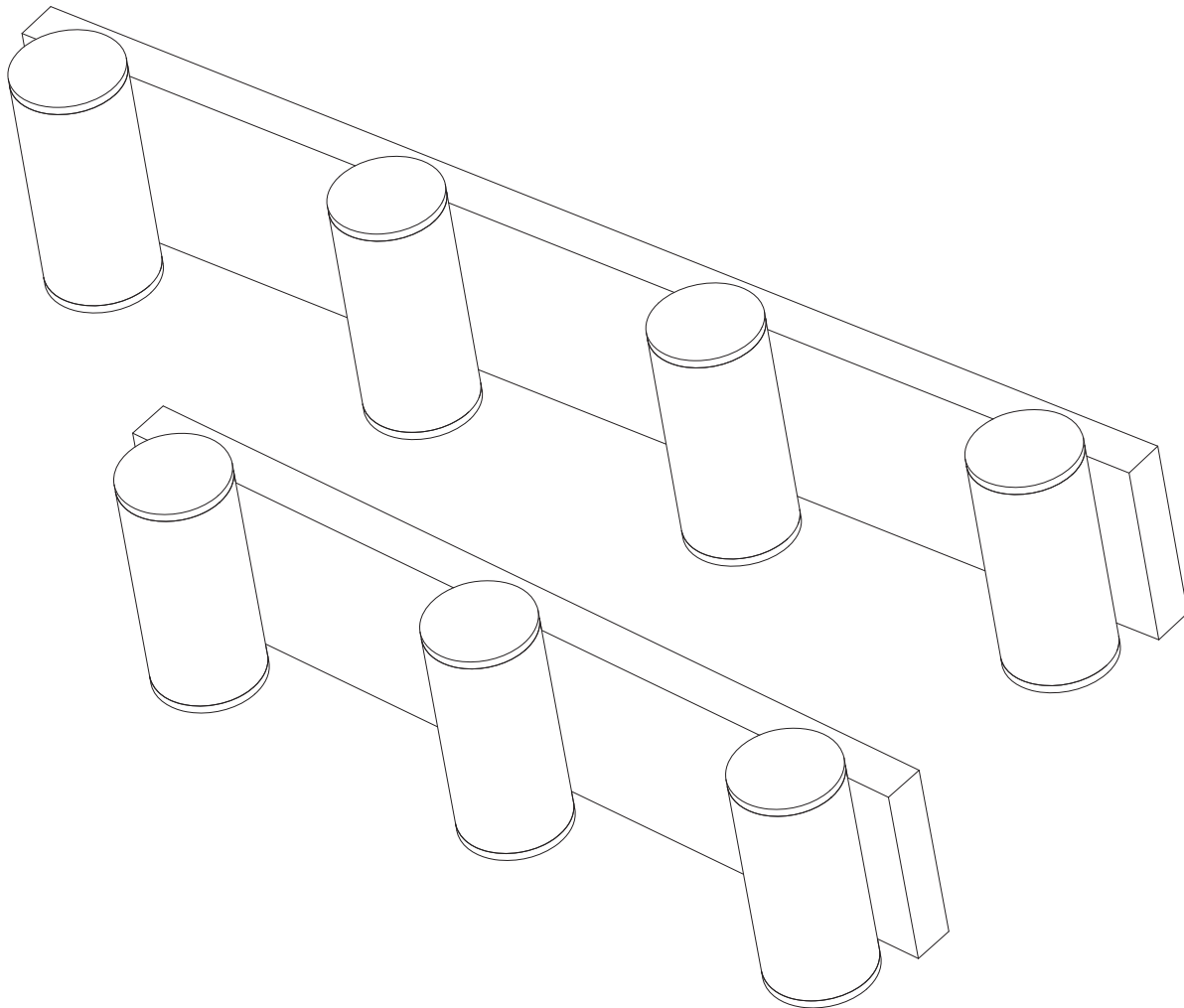
Dimmable with most LED compatible ELV and TRIAC dimmers.

This instruction shows a typical installation.

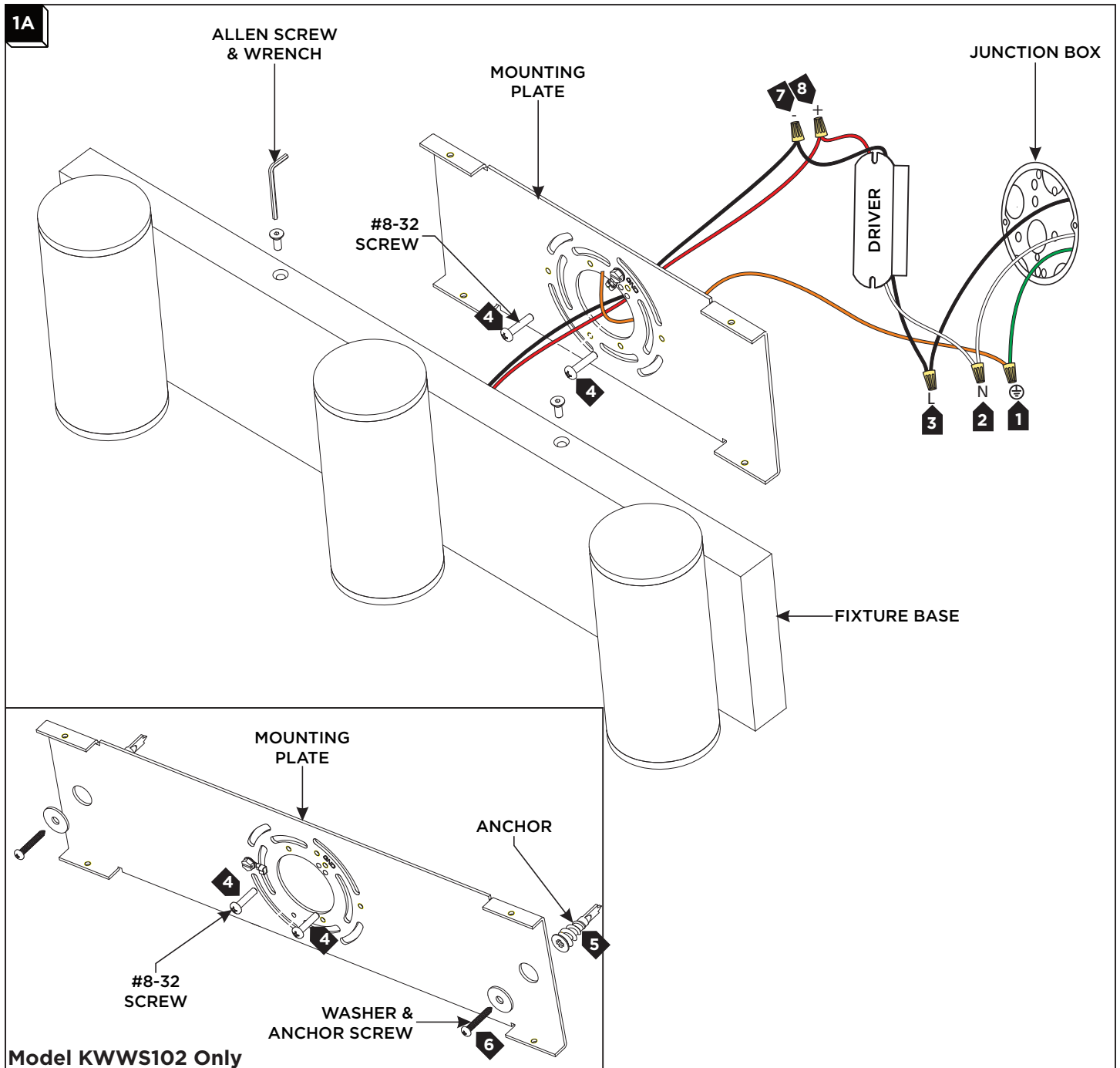


CAUTION - RISK OF FIRE
This product must be installed in accordance with the applicable installation code by a person familiar with the construction and operation of the product and the hazards involved.
Use minimum 90°C supply conductors.

SAVE THESE INSTRUCTIONS!



Install the Fixture



Model KWWS102 Only

- 1 Connect the fixture to a suitable ground in accordance with local electrical codes.
- 2 Connect the white input driver wire to the neutral power line with a wire nut.
- 3 Connect the black input driver wire to the hot power line with a wire nut.
- 4 Properly place the driver/wire nut connections into the junction box and install the mounting plate to the junction box with the two provided #8-32 screws. **For Model KWWS101**, skip to step 7.
- 5 **For Model KWS102 Only:** Line up an anchor tip with the center of an anchor hole and push the anchor into the wall up to the threads. Screw the anchor in the rest of the way with a screwdriver.
- 6 **For Model KWS102 Only:** Slide an anchor screw through a washer and screw it into the anchor to secure the mounting plate to the wall. Repeat steps 5 and 6 for the remaining anchor.
- 7 Connect the negative (-) fixture wire to the negative (-) driver output wire with a wire nut.
- 8 Connect the positive (+) fixture wire to the positive (+) driver output wire with a wire nut.
- 9 Properly place the wire nut connections into the junction box, install the fixture base onto the mounting plate with the Allen screws using the provided Allen wrench.